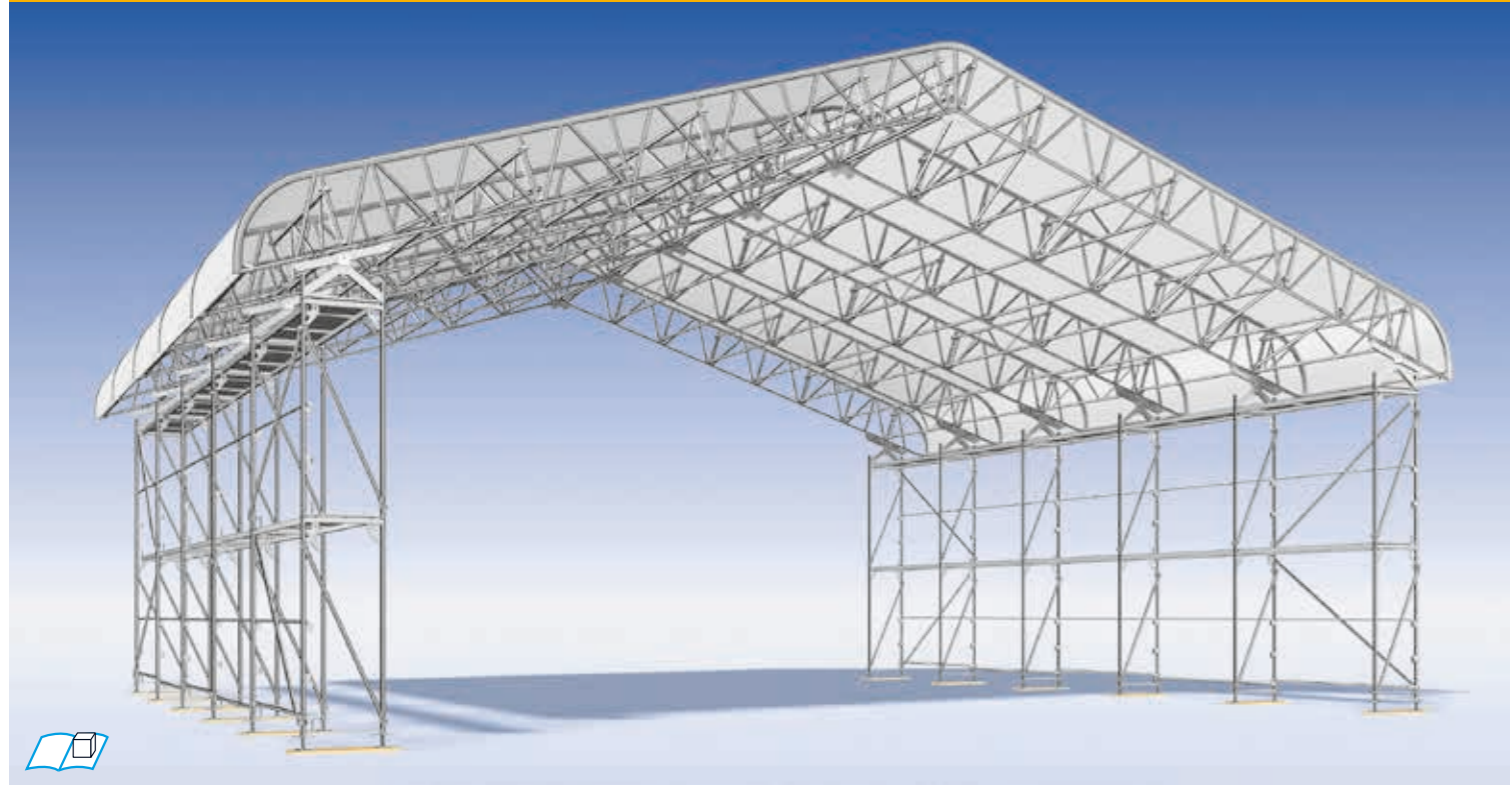


# LAYHER KEDER ROOF XL



Notice: Potentially necessary stabilizing measurement are not illustrated.



The Layher Keder Roof XL is a lightweight and sustainable weather protection roof. According to the normal climatic conditions **spans of up to 30 m** are possible. Used in conjunction with Keder rails for wall cladding, it means that the entire construction can be designed to form a lightweight hall.

The Layher Keder Roof XL is based on aluminium lattice beams 750 with integrated Keder section in the top chord.

The Layher Keder Roof has many areas of application, ranging from the **roofing during the addition of storeys**, the **repair of timber roofs and coverings**, **weather protection** for new structures, **refurbishment work on motorways and bridges**, and numerous applications for **events and normal work**.

It is a non-insulated, rainproof covering under which condensation may form and drip uncontrolled, depending on the weather.

## YOUR BENEFITS AT A GLANCE

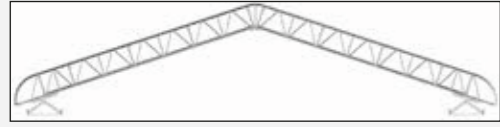
- ▶ Span up to 30 m and inclinations of 18° are possible.
- ▶ High snow loads (up to 1.0 kN/m<sup>2</sup>) on intermediate spans.
- ▶ Adaptation to all conditions thanks to roof widths and different designs as double-pitch, mono-pitch and polygonal barrel roof.
- ▶ Economical use thanks to flexible, well-thought-out and durable components, lightweight aluminium components and time-saving assembly (e.g. faster and easier fitting of Keder tarpaulins).
- ▶ Material and load bearing-capacity tables are available to ease the planning.
- ▶ No interruption of working due to weather influence.
- ▶ Fully combinable to Layher Allround Scaffolding and Layher SpeedyScaf.



## System Components

The Keder Roof XL is a lightweight, but very sturdy weather protection roof for great spans up to 30 m.

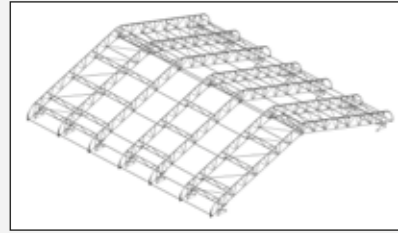
It has a standard roof angle of 18°.



### Stiffening variants

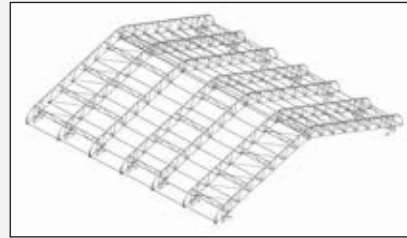
The Keder Roof XL permits, thanks to differing configurations of the stiffening components, three different stiffening variants for use depending on the span, snow load or wind load requirements.

The Keder Roof XL can be planned by using LayPLAN software. Material lists and load bearing capacity lists are available. That saves you real money when planning temporary weather protection roofs.



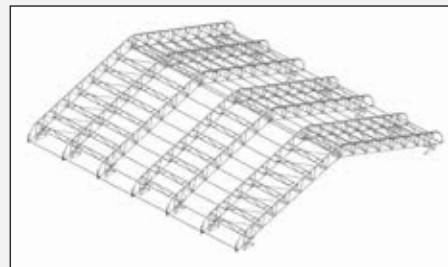
#### Type "Light"

Vertical stiffener: 2.00 m  
Bottom chord stiffener: 2.00 m



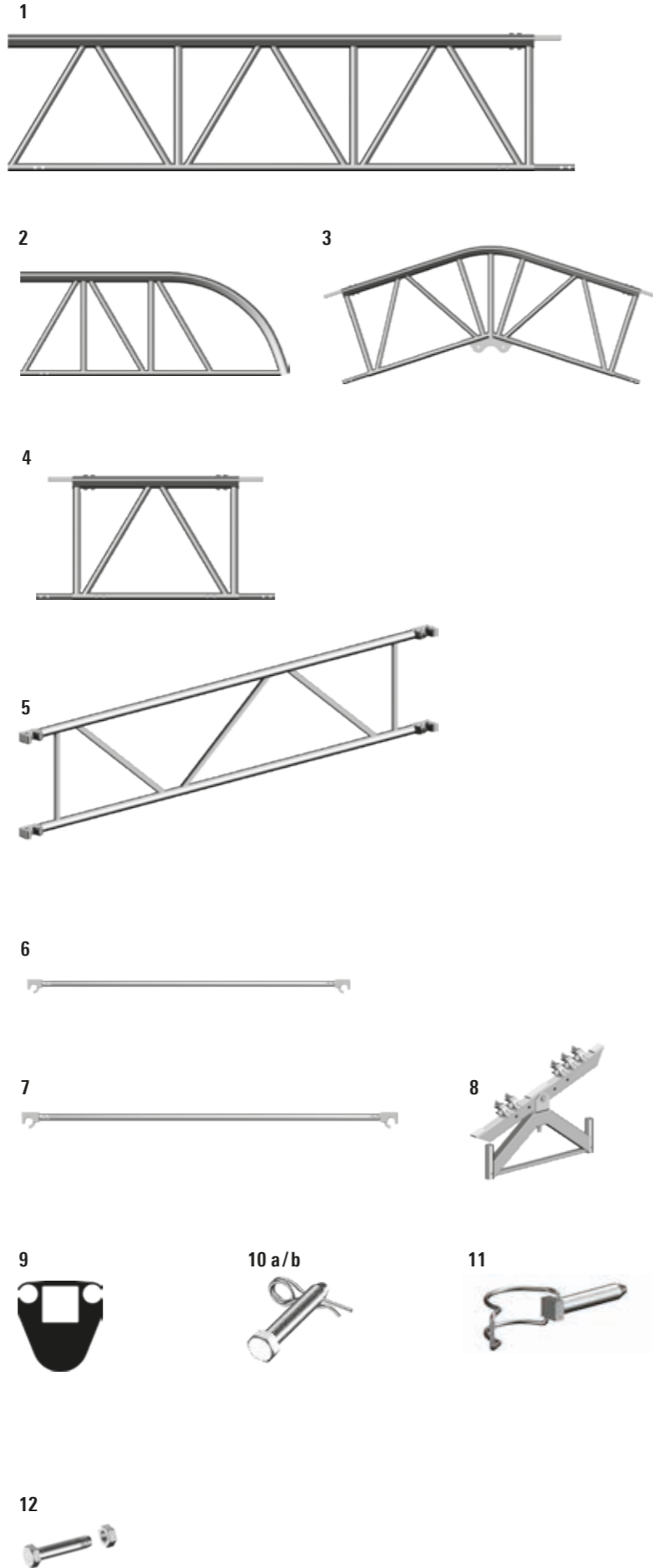
#### Type "Standard"

Vertical stiffener: 2.00 m  
Bottom chord stiffener: 1.00 m



#### Type "Heavy"

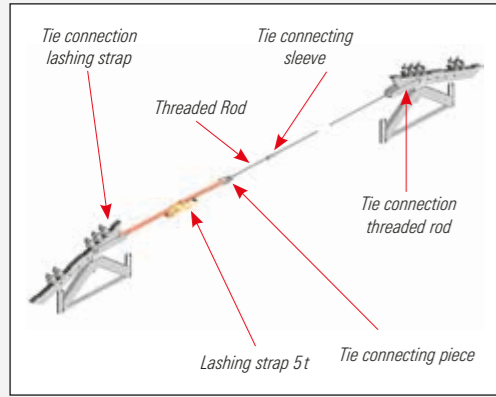
Vertical stiffener: 1.00 m  
Bottom chord stiffener: 1.00 m



Pos.	Description	Dimensions L/H x W [m]	Weight approx. [kg]	PU [pcs.]	Ref. No.
1	<b>Keder Roof XL lattice beam</b> Aluminium	2.00 x 0.78	17.3	25	<b>5975.200</b> 📦
		3.00 x 0.78	24.4	25	<b>5975.300</b> 📦
2	<b>Keder Roof XL eaves section</b>	2.00 x 0.78	14.3	25	<b>5975.100</b> 📦
3	<b>Keder Roof XL ridge section</b> 18°-Version 20°-Version	2.54 x 0.78	24.5	20	<b>5975.110</b> 📦
		2.54 x 0.78	24.5	20	<b>5975.120</b> 📦
4	<b>Keder Roof XL mono-pitch lattice beam</b>	1.06 x 0.78	14.5	25	<b>5975.106</b> 📦
5	<b>Keder Roof XL stiffener</b>	2.57 x 0.55	10.0	50	<b>5940.257</b> 📦
6	<b>Keder Roof XL ledger</b>	2.57	4.2	50	<b>5972.257</b> 📦
7	<b>Keder Roof XL horizontal diagonal brace</b>	2.57 x 1.00	4.2	50	<b>5939.100</b> 📦
		2.57 x 2.00	5.0	50	<b>5939.200</b> 📦
8	<b>Keder Roof XL support</b>	0.73	19.1	20	<b>5975.073</b> 📦
		1.09	22.4	20	<b>5975.109</b> 📦
9	<b>Keder rail seal</b>		0.5	50 📦	<b>5971.003</b> 📦
10 a	<b>Bolt, 12 x 95 mm and</b>		2.5	25 📦	<b>5976.091</b> 📦
10 b	<b>Safety clip, 2.8 mm</b>		0.5	50 📦	<b>4905.001</b>
11	<b>Hinged pin, dia. 12 mm, with pan head</b>		2.0	20 📦	<b>4905.667</b>
12	<b>Special bolt, M12 x 60 with nut alternative for Pos. 10</b>		4.0	50 📦	<b>4905.061</b>
			2.8	25 📦	<b>5975.091</b> 📦

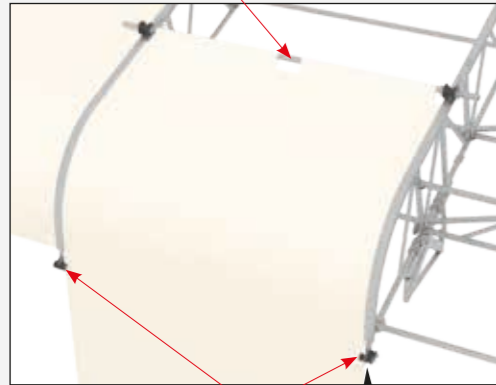
WS = wrench size PU = packaging unit 📦 = available ex works 🕒 = delivery time on request 📦 = only available in this packaging unit

Tie fastening to roof support\*:

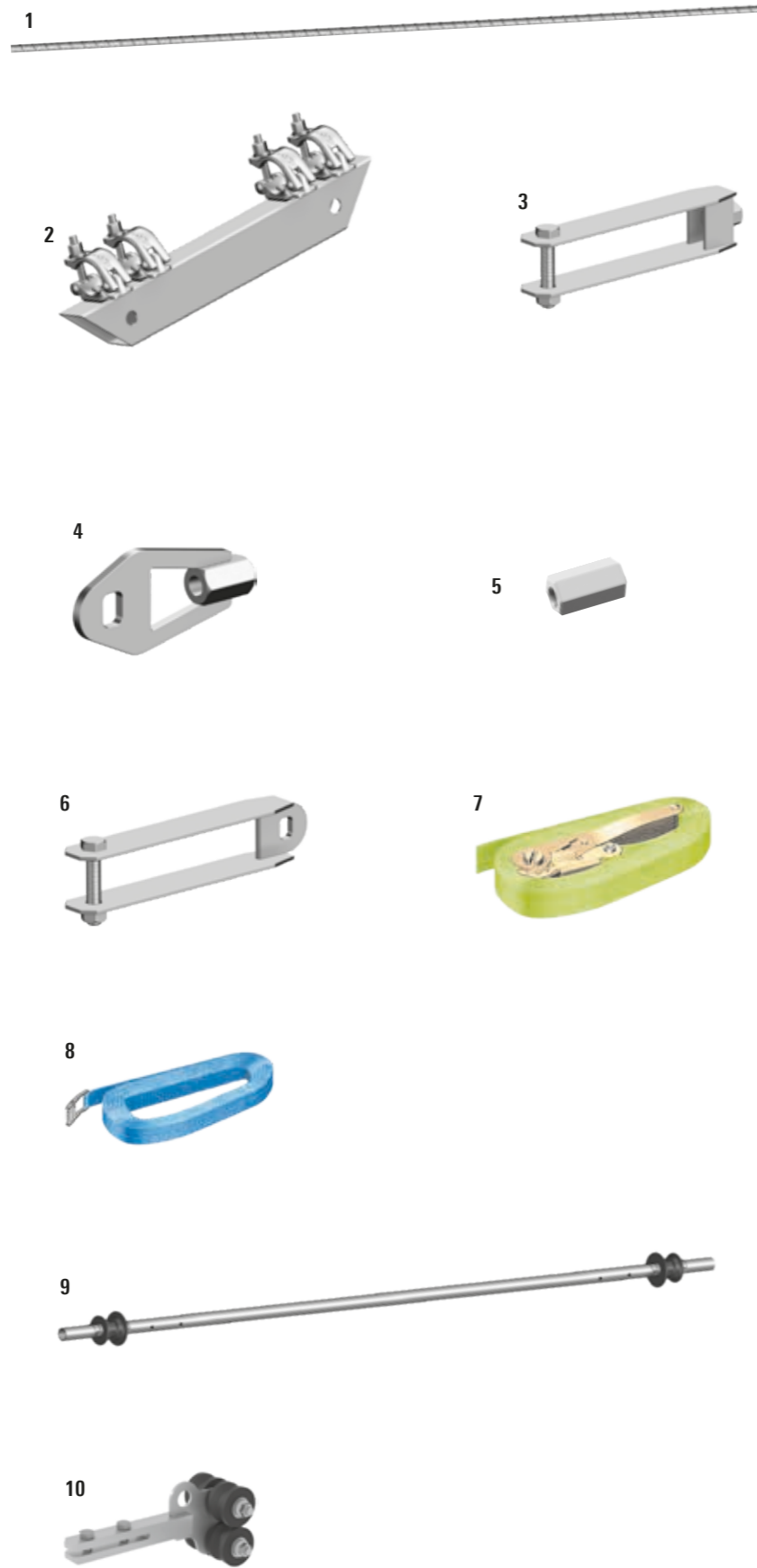
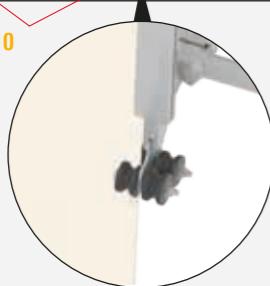


\* statically recommended

Set for tarpaulin pulling 9



Keder tarpaulin feeder 10



Pos.	Description	Dimensions L/H x W [m]	Weight approx. [kg]	PU [pcs.]	Ref. No.
1	Keder Roof XL threaded tie	2.00	2.9	100	5976.200 🏠
		3.00	4.4	100	5976.300 🏠
		4.00	5.8	100	5976.400 🏠
		5.00	7.3	100	5976.500 🏠
2	Keder Roof XL tie attachment		6.1	50	5975.000 🏠
3	Keder Roof XL tie connection threaded rod		2.2	100	5975.020 🏠
4	Keder Roof XL tie connecting piece		0.8	250	5975.030 🏠
5	Keder Roof XL tie connecting sleeve WS 30 x 90		0.4	100	5976.000 🏠
6	Keder Roof XL tie connection lashing strap		2.0	100	5975.010 🏠
7	Keder Roof XL lashing strap 5 t, 5.00 m with ratchet and ABS function for stepwise release	5.00	2.8	100	5976.600 🏠
8	Keder Roof XL polyester lashing strap, 6.00 m with clamp lock for setting the tie	6.00	0.2	10	5976.610 🏠
9	Set for tarpaulin pulling consisting of 2 castors, 1 aluminium tube 3.00 m and 4 securing pins	3.00	5.8		5971.400 🏠
				0.4	5971.401 🕒
10	Keder tarpaulin feeder		1.5	200	5971.410 🏠

WS = wrench size PU = packaging unit 🏠 = available ex works 🕒 = delivery time on request 🏠 = only available in this packaging unit

## Roof Tarpaulins

### Tarpaulins

Flammability acc. to ISO 3795  
< 100 mm / min

Cream-coloured PVC tarpaulins with a weight of 630 g / m<sup>2</sup>.

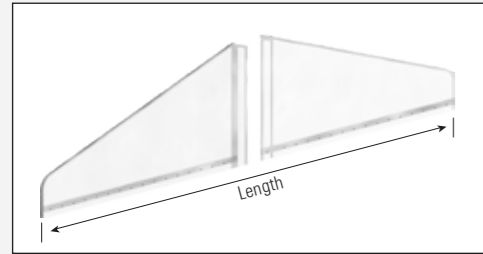
#### Material:

PVC-coated polyester fabric,  
heat and UV-resistant.

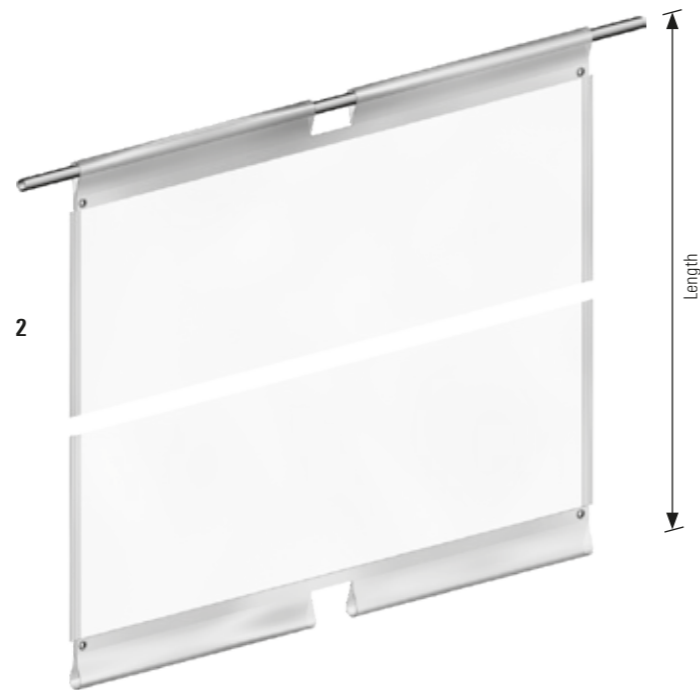
### Tarpaulins

Flammability acc. to DIN 4102 B1,  
low-inflammability

PVC tarpaulins with a weight of 650 g / m<sup>2</sup>. In the case of public events, the building inspection authorities usually demand low-inflammability tarpaulins.

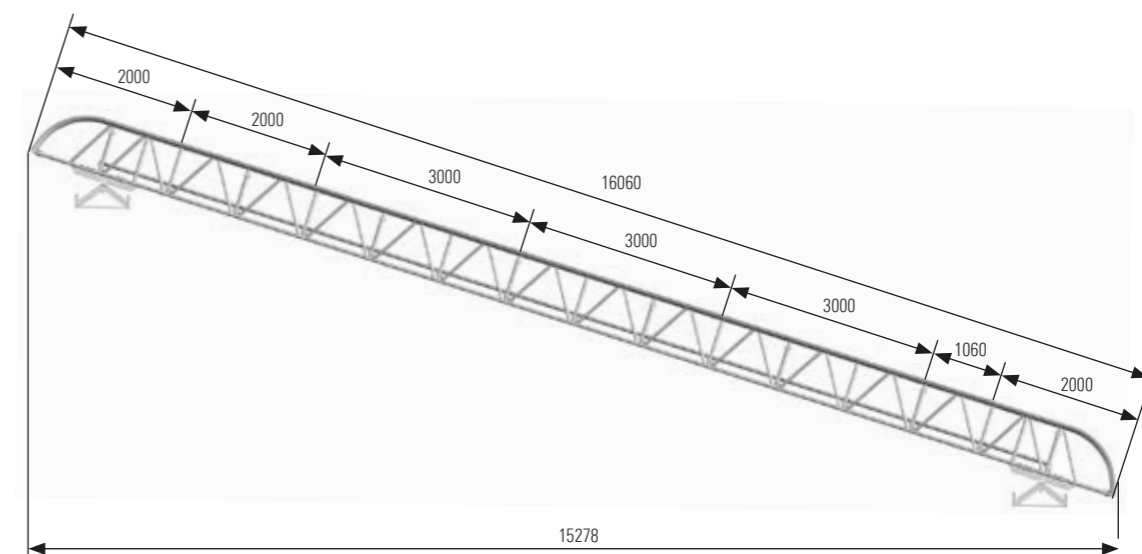
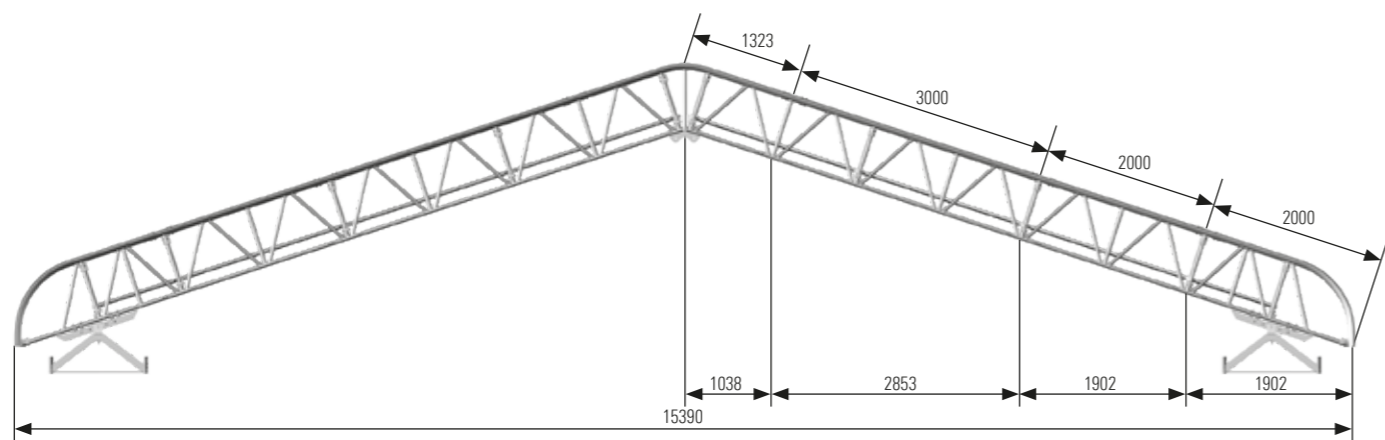


Other tarpaulins on request



Pos.	Description	Dimensions L/H x W [m]	Weight approx. [kg]	PU [pcs.]	Ref. No.	
1	<b>Keder Roof XL gable tarpaulin, flame-retarding</b> Flammability acc. to ISO 3795 < 100 mm / min 2-piece	9.60	13.8	2	<b>5972.381</b>	
		11.50	17.9	2	<b>5972.382</b>	
		13.40	22.1	2	<b>5972.383</b>	
		15.30	27.4	2	<b>5972.384</b>	
		17.20	33.1	2	<b>5972.385</b>	
		19.10	39.4	2	<b>5972.386</b>	
		21.00	44.7	1	<b>5972.387</b>	
		22.90	51.7	2	<b>5972.388</b>	
		24.80	59.5	5	<b>5972.389</b>	
		26.80	68.2	2	<b>5972.390</b>	
	4-piece	28.70	76.7	2	<b>5972.391</b>	
		30.60	85.8	5	<b>5972.392</b>	
		32.50	95.5	5	<b>5972.393</b>	
		<b>Keder Roof XL gable tarpaulin, low-inflammability</b> Flammability acc. to DIN 4102 B1, 2-piece	9.60	13.8	2	<b>5973.381</b>
			11.50	17.9	5	<b>5973.382</b>
			13.40	22.1	2	<b>5973.383</b>
			15.30	27.4	2	<b>5973.384</b>
			17.20	33.1	2	<b>5973.385</b>
			19.10	39.4	2	<b>5973.386</b>
			21.00	44.7	2	<b>5973.387</b>
22.90	51.7		2	<b>5973.388</b>		
24.80	59.5		2	<b>5973.389</b>		
26.80	68.2		2	<b>5973.390</b>		
4-piece	28.70	76.7	6	<b>5973.391</b>		
	30.60	85.7	2	<b>5973.392</b>		
	32.50	95.5	2	<b>5973.393</b>		
	2	<b>Keder Roof, roof tarpaulin, flame-retarding</b> Flammability acc. to ISO 3795 < 100 mm / min Design width 2.57 m	11.00 x 2.57	23.5	5	<b>5972.306</b>
			14.00 x 2.57	28.2	4	<b>5972.307</b>
			17.00 x 2.57	35.5	5	<b>5972.308</b>
			20.00 x 2.57	40.7	5	<b>5972.309</b>
			22.50 x 2.57	46.3	5	<b>5972.370</b>
			24.50 x 2.57	50.4	5	<b>5972.371</b>
			26.50 x 2.57	54.5	16	<b>5972.372</b>
28.50 x 2.57			58.5	5	<b>5972.373</b>	
30.50 x 2.57			62.7	16	<b>5972.374</b>	
32.50 x 2.57			66.8	16	<b>5972.375</b>	
34.50 x 2.57			70.9	5	<b>5972.376</b>	
36.50 x 2.57			75.0	5	<b>5972.377</b>	
38.50 x 2.57			79.2	5	<b>5972.378</b>	
Design width 2.07 m			11.00 x 2.07	18.4	4	<b>5972.360</b>
			14.00 x 2.07	23.5	4	<b>5972.361</b>
			17.00 x 2.07	28.5	5	<b>5972.362</b>
	20.00 x 2.07	33.5	4	<b>5972.363</b>		
	<b>Keder Roof, roof tarpaulin, low-inflammability</b> Flammability acc. to DIN 4102 B1, Design width 2.57 m	11.00 x 2.57	24.0	2	<b>5973.306</b>	
		14.00 x 2.57	28.8	1	<b>5973.307</b>	
		17.00 x 2.57	36.3	5	<b>5973.308</b>	
		20.00 x 2.57	41.6	2	<b>5973.309</b>	
22.50 x 2.57		46.8	5	<b>5973.370</b>		
24.50 x 2.57		51.0	16	<b>5973.371</b>		
26.50 x 2.57		55.2	16	<b>5973.372</b>		
28.50 x 2.57		59.3	16	<b>5973.373</b>		
30.50 x 2.57		63.5	16	<b>5973.374</b>		
32.50 x 2.57		67.7	16	<b>5973.375</b>		
34.50 x 2.57		73.9	16	<b>5973.376</b>		
36.50 x 2.57		76.0	16	<b>5973.377</b>		
38.50 x 2.57		80.1	16	<b>5973.378</b>		
Design width 2.07 m		11.00 x 2.07	18.8	2	<b>5973.360</b>	
		14.00 x 2.07	24.0	5	<b>5973.361</b>	
		17.00 x 2.07	29.2	1	<b>5973.362</b>	
	20.00 x 2.07	34.4	5	<b>5973.363</b>		
3	<b>Tarpaulin clip</b>		2.0	50	<b>5971.141</b>	

WS = wrench size PU = packaging unit 📦 = available ex works 🕒 = delivery time on request 📦 = only available in this packaging unit



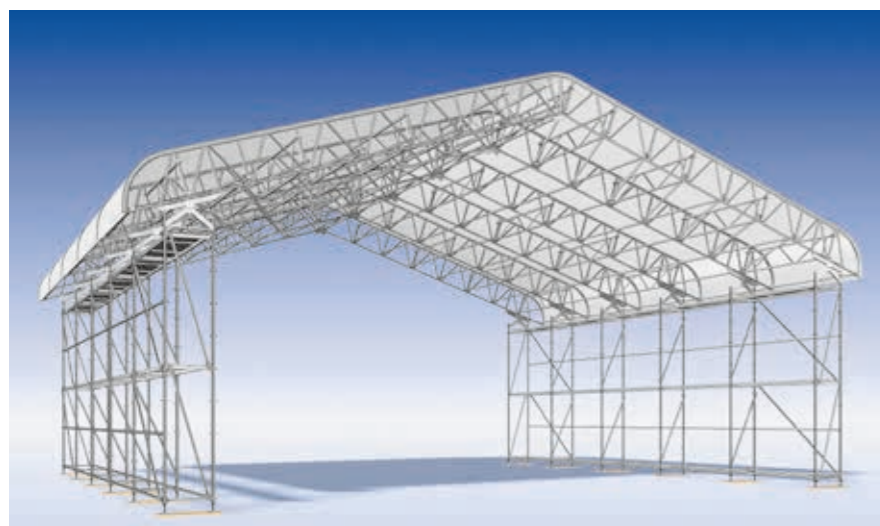
**Material example**

**ROOFED BASE AREA:** 15.40 m x 12.86 m (5 bays each 2.57 m), without support scaffolding, weight: 1,942.3 kg (9.87 kg / m<sup>2</sup>)

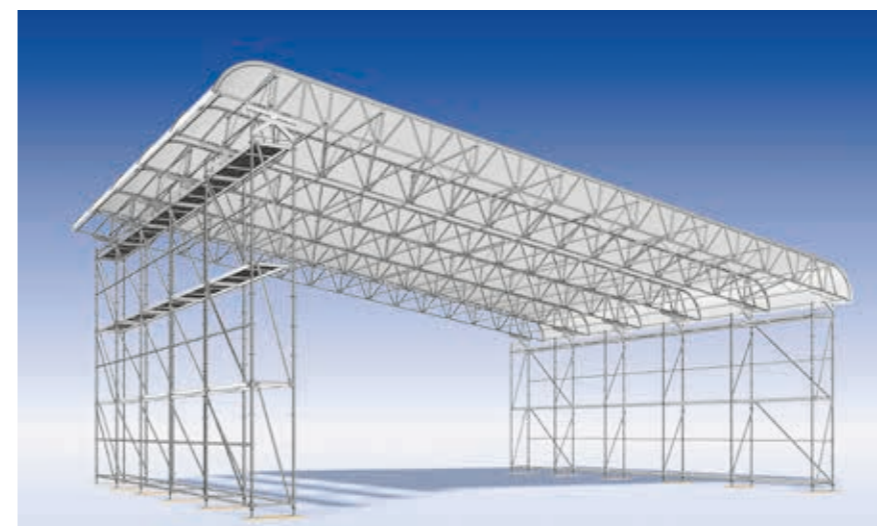
Following material is needed	Quantity	PU [pcs.]	Ref. No.
Safety clips 2.8 mm (72 pcs. needed)	2	50	4905.001
GI Securing pins (72 pcs. needed)	4	20	4905.667
Horizontal diagonal brace 1.00 m x 2.,57 m	28		5939.100
Stiffener 2.57 m	30		5940.257
Keder rail seal (36 pcs. needed)	1	50	5971.003
Tarpaulin clips (100 pcs. needed)	2	50	5971.141
Ledger 2.57 m	60		5972.257
Tarpaulin 2.57 x 20.00 m	5		5972.309
Support 0.73 m	12		5975.073
Eaves section	12		5975.100
Ridge section	6		5975.110
Lattice beam 2.00 m	12		5975.200
Lattice beam 3.00 m	12		5975.300
Bolt dia. 12 x 95 mm (72 pcs. needed)	3	25	5976.091

**ROOFED BASE AREA:** 15.30 m x 12.86 m (5 bays each 2.57 m with a roof angle of 18°), without support scaffolding, weight: 1,869.1 kg (9.50 kg / m<sup>2</sup>)

Following material is needed	Quantity	PU [pcs.]	Ref. No.
Safety clips 2.8 mm (72 pcs. needed)	2	50	4905.001
GI Securing pins (72 pcs. needed)	4	20	4905.667
Horizontal diagonal brace 1.00 m x 2.57 m	28		5939.100
Stiffener 2.57 m	30		5940.257
Keder rail seal (36 pcs. needed)	1	50	5971.003
Tarpaulin clips (100 pcs. needed)	2	50	5971.141
Ledger 2.57 m	61		5972.257
Tarpaulin 2.57 x 20.00 m	5		5972.309
Support 0.73 m	12		5975.073
Eaves section	12		5975.100
Ridge section	6		5975.106
Lattice beam 2.00 m	6		5975.200
Lattice beam 3.00 m	18		5975.300
Bolt dia. 12 x 95 mm (72 pcs. needed)	3	25	5976.091



Notice: Potentially necessary stabilizing measurement are not illustrated.



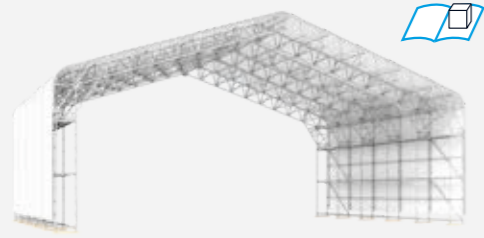
Notice: Potentially necessary stabilizing measurement are not illustrated.

WS = wrench size PU = packaging unit = available ex works = delivery time on request = only available in this packaging unit

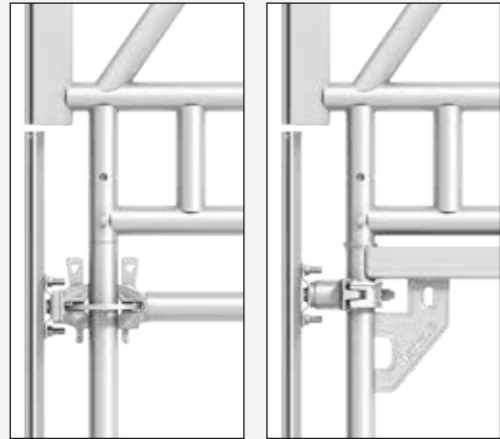
## Keder halls

### Keder halls

The Bending-Resistant Corner is available as a special roof support, to create visually attractive and closed halls with wide spans using the Keder Roof XL. It can be mounted both on support scaffolding made from Allround parts and on SpeedyScaf.



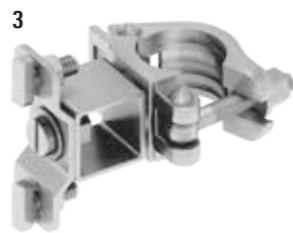
The Bending-Resistant Corner can be connected quickly and easily by setting it down onto the spigots. The roof tarpaulins are joined to the wall covering using rotatable keder rail holders and keder rails 2000 from the Layher accessories range.



Transition from Keder Roof XL to Allround support scaffolding

Transition from Keder Roof XL to SpeedyScaf support scaffolding

The support scaffolding can also be used as fully fledged work scaffolding, and the attachment of brackets or inward-facing projections presents no problem when parts from the Layher construction kit are used.

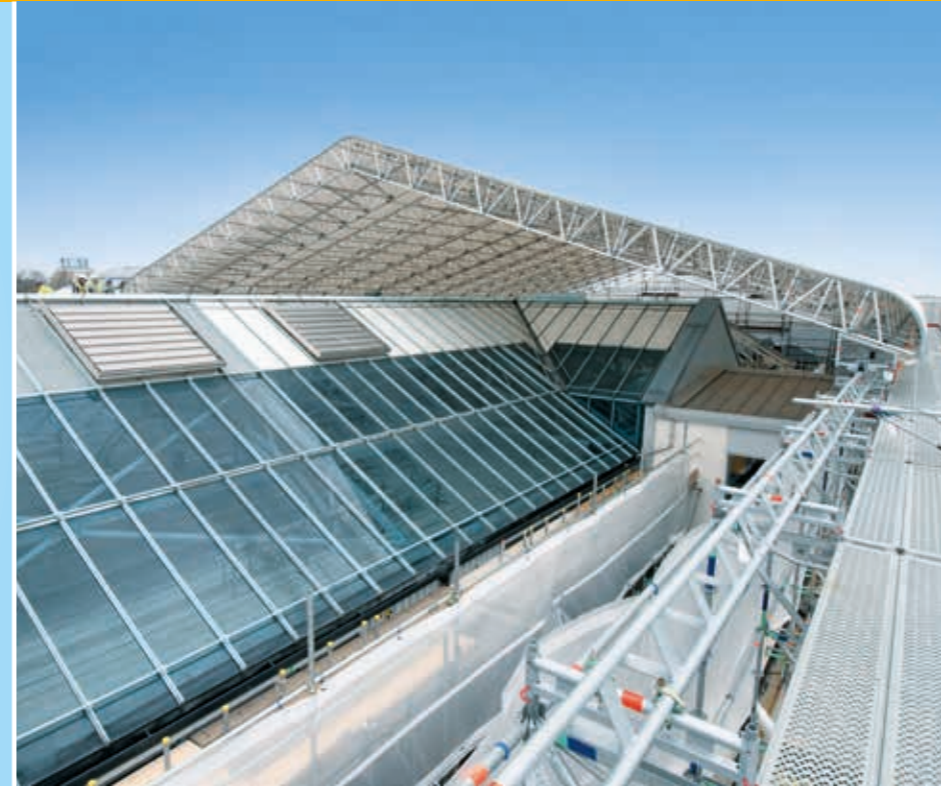


Pos.	Description	Dimensions L/H x W [m]	Weight approx. [kg]	PU [pcs.]	Ref. No.
1	<b>Bending-resistant corner XL</b>		34.7	10	<b>5975.160</b> 🕒
2	<b>Keder rail holder, rotatable, with wedge head, incl. 2 groove bolts, for Allround Scaffolding</b>		0.9	25	<b>5573.000</b> 🏠
3	<b>Keder rail holder, rotatable, with half-coupler, incl. 2 groove bolts, for SpeedyScaf System</b>		1.0	25	<b>5573.006</b> 🏠
4	<b>Aluminium keder rail 2000</b>	1.30	2.0	50	<b>4201.130</b> 🏠
		2.00	3.0	50	<b>4201.200</b> 🏠
		2.25	3.3	50	<b>4201.220</b> 🏠
		2.50	3.8	50	<b>4201.250</b> 🏠
		3.00	4.5	50	<b>4201.300</b> 🏠
		4.00	6.0	50	<b>4201.400</b> 🏠

WS = wrench size PU = packaging unit 🏠 = available ex works 🕒 = delivery time on request 🏠 = only available in this packaging unit

# MOBILE ROOFS

THE ECONOMICAL EXPANSION OF LAYHER ROOF SYSTEMS



Whether on a rapidly advancing construction site or under cramped conditions, you can get Layher's protective roofs rolling to where the action is with only a few extra components.

Flexibility and economy to the highest degree with mobile roofs from Layher.

## YOUR BENEFITS AT A GLANCE

- ▶ Extension for the Layher weather roofs.
- ▶ Flexibility is guaranteed thanks to possible openings to slide the roof apart. Also overlapping roofs are possible.
- ▶ Flexible and economic solution by moving the roof if the complete site is not needed to be covered.
- ▶ Slight variations in the alignment of the rails can be compensated with a transverse adjustment on the trolley.
- ▶ Fully combinable with Layher SpeedyScaf and Layher Allround Scaffolding.
- ▶ Flexible bay length – independent from the substructure.

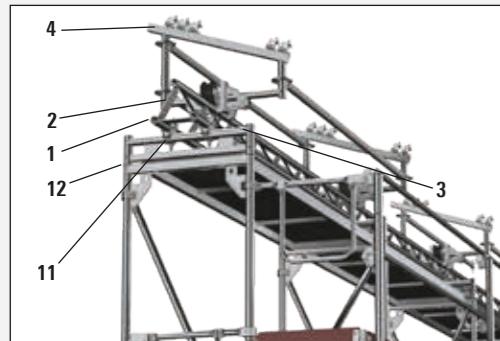
## Mobile Roofs

Layher weather protection roofs can easily be made mobile with a few additional parts.

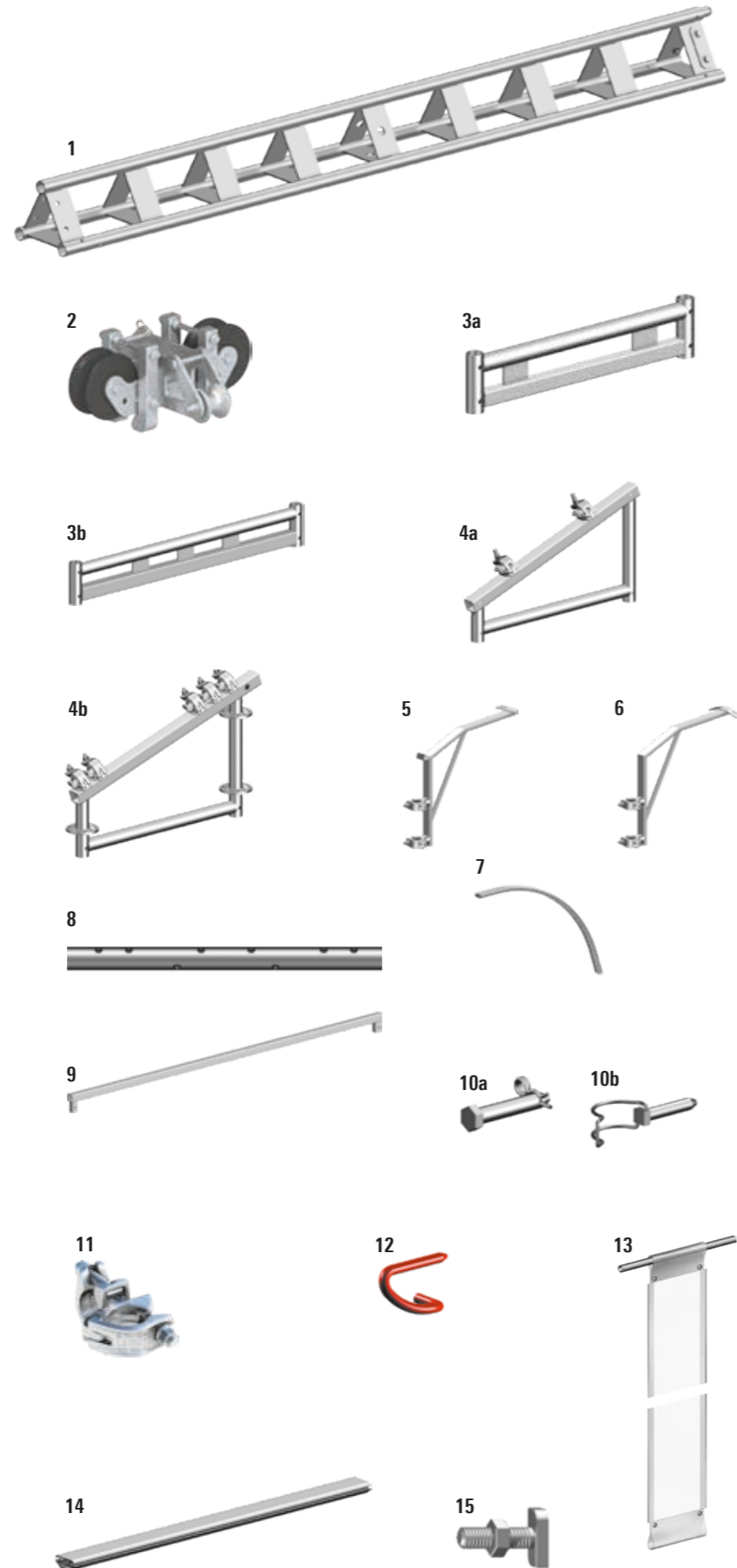
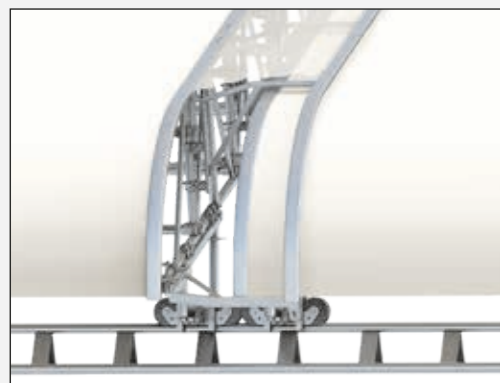
This can then be moved section by section to keep pace with construction progress, so it's no longer essential to provide a roof over the entire surface, or alternatively to dismantle and rebuild a roof for each stage of building work. The mobile roofs fit onto all scaffolding systems and are also flexible and economical to use. The rails 1 don't need to be laid exactly parallel, since the trolley 2 permits equalization in the transverse direction.



The support scaffolding bay widths are completely independent of the mobile roof, allowing the scaffolding to be built with wider bays. Besides faster assembly, the supporting structure also permits material savings. The assembly of the roofs themselves is also simple and quick: the roof bays can for example be assembled at a readily accessible point at the gable end of the building, from an auxiliary scaffolding or using a crane. One bay at a time is assembled, then moved, and has the next bay attached to it.



The overlap bracket T18 5 can be used, when the roof binders are mobile. If separate segments of the roof must be put together, there will be a gap in the roof. By using the overlap bracket T18 5 combined with aluminium keder rails 2000 14 and roof tarpaulins 0.67 m wide 13, these gaps can be closed. For the eaves, the overlap eaves bracket T18 6 and the overlap keder bow 2000 7 is used.



Pos.	Description	Dimensions L/H x W [m]	Weight approx. [kg]	PU [pcs.]	Ref. No.
1	Rail T19, 3.00 m	3.00 x 0.30	58.0	21	5938.041 🏠
2	Trolley T17 Castors of Polyamide, permanent lift-off preventer	0.40 x 0.45	16.2	50	5938.040 🏠
3a	Adapter for rail T12 0.73 m	0.73 x 0.17	5.5	100	5938.027 🏠
3b	Adapter for rail T12 1.09 m	1.09 x 0.17	11.5	100	5938.028 🏠
4a	Roof support, 20° rigid, 0.73 m (for Keder Roof)	0.51 x 0.80	12.4	20	5938.022 🏠
4b	Roof support, 18° rigid, 0.73 m (for Keder Roof XL) with Allround rosettes	0.51 x 0.80	15.5	20	5938.073 🏠
5	Overlap bracket T18		5.5	10	5938.044 🏠
6	Overlap bracket eaves T18		5.4	10	5938.043 🏠
7	Overlap Keder bow 2000		2.3	50	5938.042 🕒
8	Lattice beam connector T16, dia. 38 mm	0.54	2.4	350	4925.000
9	Connector for trolley for roof support 5938.022	2.63 x 0.13	11.1	50	5938.019 🏠
10a	Bolt, dia. 12 x 65 mm and Safety clip, 2.8 mm		3.5	50	4905.066 🏠
			0.5	50	4905.001 🏠
10b	Hinged pin 8a or 8b for connecting the rails 5941.300 with lattice beam spigots 4922.000 and for securing of 5938.019		2.0	20	4905.667 🏠
11	Double coupler with coarse thread Class BB, EN 74-1 RA BB C3 M, quality-monitored, for use in the classes B and BB on steel and aluminium tube acc. to approval Z-8.331-947	WS 19	1.3	25	4777.019
		WS 22	1.3	25	4777.022
12	Locking pin, red, dia. 11 mm for securing of 5938.027, 8638.028		0.2	100	4000.001
13	Keder Roof tarpaulin, 0.69 m wide				on request
14	Aluminium keder rail 2000	1.30 2.00 2.25 2.50 3.00 4.00	2.0 3.0 3.3 3.8 4.5 6.0	50 50 50 50 50 50	4201.130 🏠 4201.200 🏠 4201.220 🏠 4201.250 🏠 4201.300 🏠 4201.400 🏠
15	Captive bolt for keder rail M12 x 40, with nut		5.0	50	4206.001 🏠

WS = wrench size PU = packaging unit 🏠 = available ex works 🕒 = delivery time on request 🏠 = only available in this packaging unit